

Recombinant Staphylococcus aureus Protein A

Cat. No. Protein A-2938S **Lot. No.** (See product label)

SPECIFICATION

Product Overview

Protein A is A cell wall protein secreted by Staphylococcus aureus, also known as Staphylococcal Protein A(SPA), Natural protein A is mainly composed of three functional regions: signal peptide, 5 antibody binding domains and cell wall peptidoglycan binding domains. The most studied and applied region is the 5 antibody binding domains with antibody binding functions. Recombinant protein A was genetically engineered and expressed in the antibody-binding domain (E-D-A-B-C) of natural protein A, which has the complete antibody-binding function of natural protein A.

Species Staphylococcus aureus

Source E.coli

Tag Non

Form 5mM PB, pH7.4

Molecular Mass 34.0kDa

Purity ≥95%(SDS-PAGE)

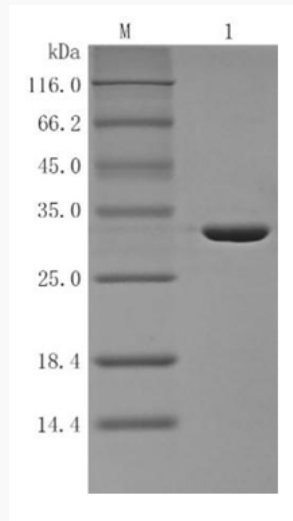
Storage Freeze-dried powder -20±5°C, after dissolution to avoid repeated freeze-thaw.

 Tel: 1-631-559-9269 1-516-512-3133

 Email: info@creative-biomart.com  Fax: 1-631-938-8127

 45-1 Ramsey Road, Shirley, NY 11967, USA

SDS-PAGE



 Tel: 1-631-559-9269 1-516-512-3133

 Email: info@creative-biomart.com  Fax: 1-631-938-8127

 45-1 Ramsey Road, Shirley, NY 11967, USA